



# LPG Cylinder Factory Development



**Torkuaz Joburg** has partnered with **Sankur Ltd CO**, a leading LPG Cylinders Company with over 40 years' experience and operations in Turkey, Libya, Bangladesh, to develop LPG Manufacturing Plant in South Africa.

**Sankur** expertise is in LPG Cylinder Production, LPG Cylinder Revalidation, LPF Cylinder Spare Parts Production, Machine Production and Mould Production. Through this partnership we will bring a state-of-the-art cylinders manufacturing plant to this country that will serve to meet the increasing energy demands in South Africa amidst the growing needs to not only provide South Africans with an alternate power source, but also bringing a safe, and environmentally friendly solution to the public.

Currently 99.9% of LPG cylinder bottle are Imported in South Africa. Our goal is to minimize LPG Cylinder bottle to imports and provide jobs downstream.

<http://en.sankur.com.tr/> <http://www.torkuazjoburg.com/lpg-cylinder-manufacture-new-development/>





## TURNKEY LPG CYLINDER LINES

**Torkuaz Joburg** and **Sankur** started working for the production of quality LPG cylinders manufacture, adhering to all the necessary legal regulations and standards in South Africa.

Reduce Costs of Cylinders by using local sources raw materials. Improving Quality and Reliable LPG Cylinders.

**Sankur** Is One Of The Productor Company That Has Been Active In The LPG Cylinder Sector More Than 45 Years And Operating Its Facilities In Turkey, Libya And Bangladesh Countries.

**Sankur** Continues These Activities In Its 10 Factories Composed Of 45,000 M2 Closed Area With More Than 200 Employees And Over 40,000 Tons Of Annual Material Processing Capacity.

**In This Sector, It Grows Rapidly As Being The Only LPG Cylinder Manufacturer That Can Produce Machine, Mould And Spared Part Needs Within Its Own Capacity. Our Products Reach Over 65 Countries.**

<http://www.torkuazjoburg.com/lpg-cylinder-manufacture-new-development/> <http://en.sankur.com.tr/>



## Profitable Investment opportunity in LPG cylinder plant.

**Liquefied petroleum gas**, or LPG is one of the most common alternative fuels used in the world today. In fact, in many places, it isn't an alternative fuel at all. LPG is a mixture of commercial butane and commercial propane having saturated and unsaturated hydrocarbons.

LPG is gaseous at normal atmospheric pressure, but may be condensed to the liquid state at normal temperature, by the application of moderate pressures. Liquefied petroleum gas {LPG} is a flammable mixture of hydrocarbon gases used as a fuel in heating appliances and vehicle. LPG is synthesized by refining petroleum or "wet" natural gas and is almost derived entirely from fossil fuel.

LPG is primarily used as a thermal fuel and is consumed by industrial, commercial and household consumers. It burns cleanly, releasing very few sulphur emissions, and posing no ground or water pollution hazards.

There are over a thousand applications of LPG particularly in commercial and industrial businesses.

- 1. Industrial customers:** for heating purposes where a readily controlled temperature is needed, i.e. motor vehicle paint shops or as fuel for fork lift trucks within warehouses etc.
- 2. Commercial:** This includes, for example, a shopping centre with a number of restaurants which may have one bulk tank with LPG reticulated to individual restaurants/stores.
- 3. Autogas:** LPG can also be used to power motor vehicles. Vehicles that use Autogas are fitted with two fuel tanks, one for Autogas and another for petrol/diesel. The vehicle can therefore switch between Autogas and petrol/diesel at any time.
- 4. Households:** LPG is mainly used by households for heating and cooking. Recently, residential estates have also started installing LPG reticulation systems supplying gas into the different properties inside these estates.



# SANKUR

**LPG Cylinder** is an essential item for filling liquefied petroleum gas used for cooling purpose. The body of LPG cylinder is deep drawn in two pieces then these are welded together to make a compact unit without any leak and defect etc.

LPG cylinders are in use in South African market 5 Kg., 9kg.,14Kg., 19Kg.and 48Kg. capacities.

LPG bottling plant is a plant where LPG is filled into bottles (cylinders) for storage and distribution among various LPG distributors.

The plant has the facility to receive bulk LPG by Tank trucks (of various capacities e.g. 12MT, 17MT, etc) or pipeline from a reliable source e.g. Refinery or any other LPG Bottling Plant.

After receipt of Bulk LPG, filling of LPG into cylinders is done.

A key factor influencing the type and size of filling plant will be where the demand for LPG is in the country. In emerging markets this may be difficult to assess and that might influence the choice to look at temporary facilities such as containerized filling.

These can be used to sustain a growing market until such time that a more permanent facility can be justified.

**LPG cylinder can provide a modern alternative to traditional cooking fuels (such as firewood, charcoal or deserts), contributing to the reduction of air pollution. In heating, using wood instead of wood, it prevents the waste of fertilizer by using instead of dung. It can be easily adapted to individual home requirements in the kitchen or elsewhere.**

**In terms of safety, it is necessary to use hoses and detectors that comply with the standards. In addition to cooking and heating, it is practical and easy to use for many purposes as a result of being portable. There are different types of cylinder for domestic use.**



## Manufacture Layout .

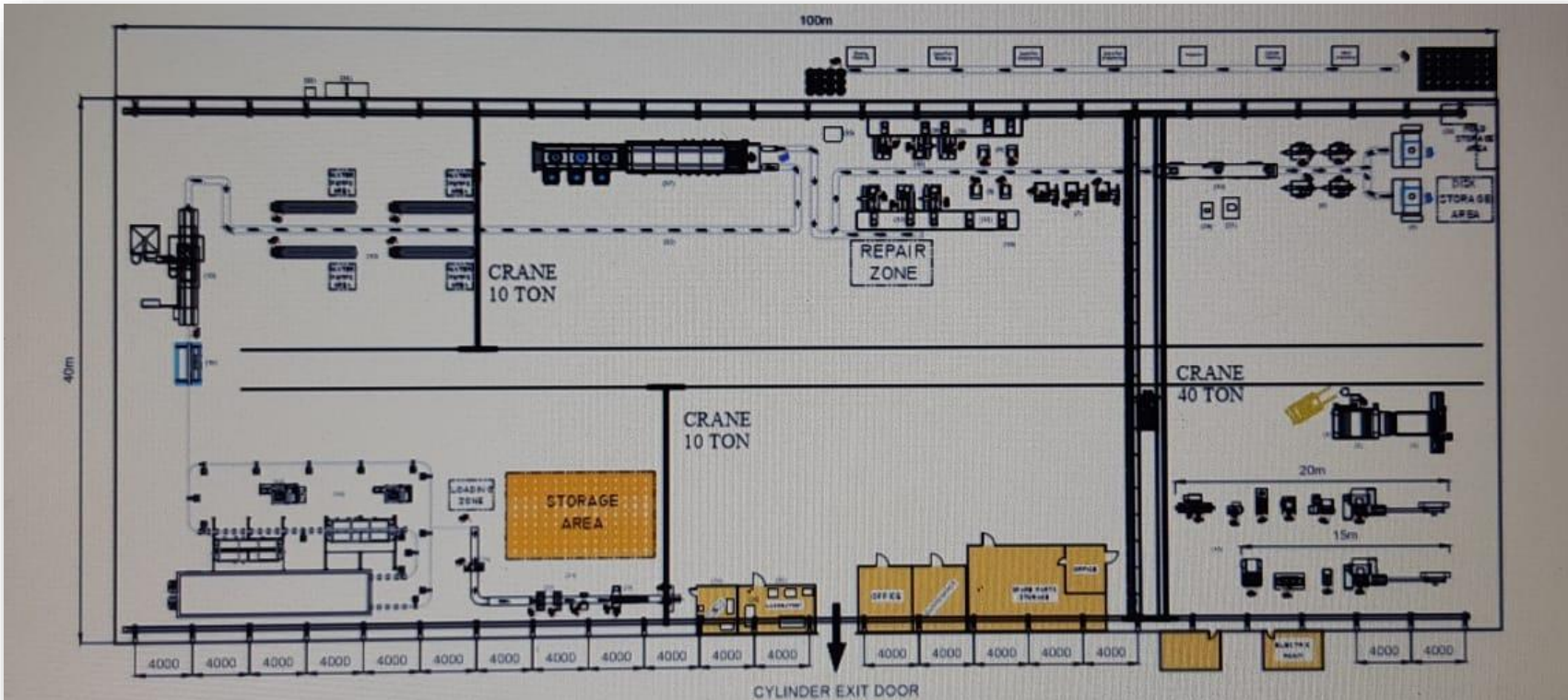
Manufacture Land : 20 000 m<sup>2</sup>

Factory Closed area: 5 000 m<sup>2</sup>

Office area: 600 m<sup>2</sup> – Total close area: 5 600 m<sup>2</sup>

Manufacturing Cylinder Capacity : 220 cylinders per hour.(Per day 8x220= 1760)

LPG Cylinder Manufacturing Plant, was designed in Sankur Limited CO.



### FACTORY EQUIPMENTS

LPG CYLINDER BLANKING LINE

LPG CYLINDER FORMING LINE

LPG CYLINDER WELDING LINE

SURFACE TREATMENT & PAINTING LINE

HAND RING PRODUCTION LINE

BASE RING PRODUCTION LINE

LPG CYLINDER TEST EQUIPMENTS & MACHINES

LABORATORY EQUIPMENTS / MACHINES

VALVE NECK PRODUCTION LINE

FACTORY GENERAL ITEMS

Equipment is under guaranteed of Sankur Limited CO.

# SANKUR COMPANIES & FACTORIES

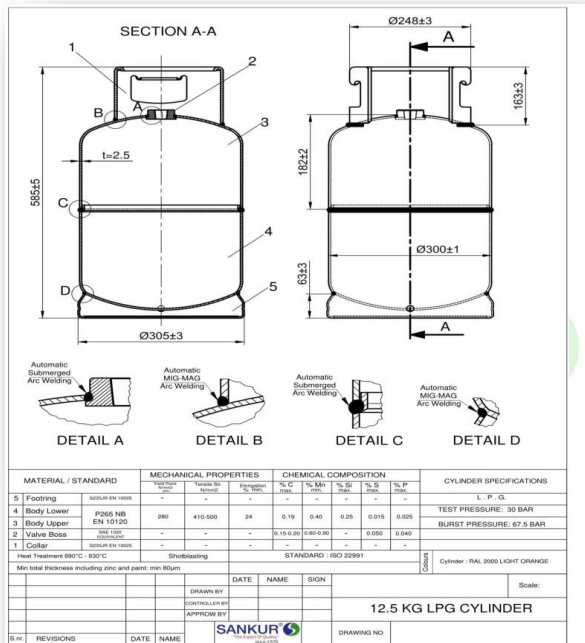


- SANKUR, Kocaeli, TURKEY.
- SANKUR LIMITED CO.
- LPG CYLINDER PRODUCTION FACTORY.
- LPG CYLINDER SPARE PARTS PRODUCTION FACTORY.
- MACHINE & DIE SET PRODUCTION FACTORY.
- SANKUR Chittagong, BANGLADESH,
- JMI SANKUR CYLINDERS LIMITED CO.
- JMI SANKUR AUTOTANK LIMITED CO.
- JMI SANKUR VALVE & BUNG LIMITED CO.
- LPG CYLINDER PRODUCTION FACTORY.
- LPG CYLINDER REVALIDATION FACTORY.
- LPG AUTOTANK PRODUCTION FACTORY.
- VALVE & BUNG PRODUCTION FACTORY.
- SANKUR, Tripoli, LIBYA.
- SANKUR LPG CO.
- LPG CYLINDER PRODUCTION FACTORY.
- LPG CYLINDER REVALIDATION FACTORY.



## WE SUPPLY..

- LPG Cylinder Raw Materials
- All Certified Auxiliaries For Cylinder Production
- Autogas Station Full Equipment's
- LPG Storage Tanks And Equipment's
- LPG Cylinder Accessories
- Powder And Wet Paint Lines
- Heat Treatment Lines
- Laboratory Equipment's
- Shot Blasting Lines
- Zinc Coating Lines





## OUR PRODUCTS

- LPG Cylinder Between 3 Kg - 50 Kg
- LPG Cylinder Base Ring - Hand Ring 80 Types
- LPG Cylinder Valve & Valve Neck
- LPG Cylinder Auto tank Between 20 Lt - 120 Lt
- Hydraulic Deep Drawing Pres Between 30 Ton - 450 MT.
- Mechanical Pres Between 40 Ton - 800 Ton
- LPG Cylinder Welding Automation Machines
- Skirt Cut Trim Joggle Joint Machines
- Hydrostatic Test Machines
- All Types Of Forming And Cutting Die Sets

## OUR SERVICES

- Turnkey LPG Cylinder Production Lines.
- Turnkey LPG Auto tank Production Lines
- Turnkey LPG Cylinder Revalidation Lines.
- Turnkey LPG Valve & Valve Neck Production Lines.
- Turnkey LPG Cylinder Hand Ring & Base Ring Production Lines Turnkey LPG Cylinder Filling Lines.
- Project Engineering – Installation – Supervision – Training
- Joint Venture - Production Management





SANKUR

SANKUR

SANKUR

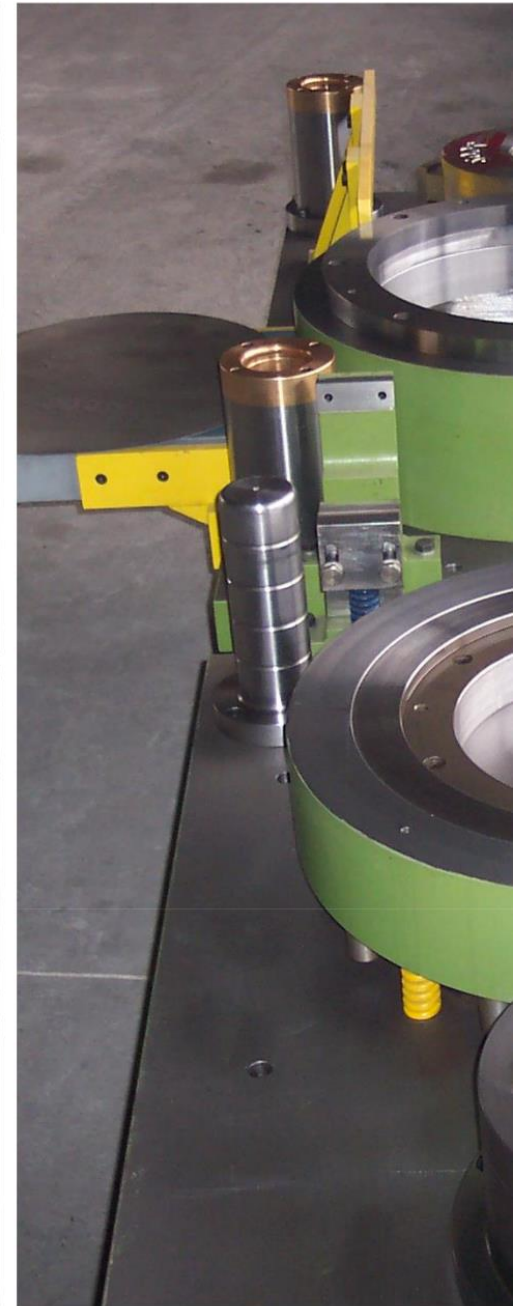
SANKUR

SAHIN

SAHIN







REFERENCES  
& PARTNERS

AYGAZ

JMI Group

EVAS

TOTALGAZ

BiZiMGAZ

iPRAGAZ

SUPERGASBRAS

HABAŞ



Demirören

DURULSON

Midland Energy LIMITED

JABER GROUP  
REAL ESTATE

شركة هيفاء للخدمات الصناعية ش.م.  
HAIFA INDUSTRIAL SERVICES CO.LLC

BREGA  
Petroleum Marketing Company

TURNAGAZ

ALLIED  
EAST AFRICA LTD

TIANLONG

GENÇ ENERJİ  
elgaz

cryocan

delta gaz

HASGAZ



**TORKUAZ JOBURG TRADING PTY LTD**

126 Ashton Manor Smit Street, Fairland, 2190.

Gauteng, Johannesburg - SOUTH - AFRICA

Mobile :+27 81 015 28 64

[www.torkuazjoburg.com](http://www.torkuazjoburg.com) – [info@torkuazjoburg.com](mailto:info@torkuazjoburg.com)



**SANKUR LIMITED CO.**

Sanayi Mahallesi D-130 Karayolu Caddesi No:201 Kocaeli /TURKIYE

Phone:+90 262 335 0542-+90 262 335 0524

[www.sankur.com.tr](http://www.sankur.com.tr) – [info@sankur.com.tr](mailto:info@sankur.com.tr)